

# THE USUAL SUSPECTS

## Irregular Steer Tire Wear Patterns



**One Sided Wear**

|                   |                                                                            |
|-------------------|----------------------------------------------------------------------------|
| Appearance        | Wear increasing from one side to the other.                                |
| Probable Cause    | Out of alignment specification parameters (camber, toe, axle parallelism). |
| Corrective Action | Check alignment and inspect for worn parts.                                |
| Tire Disposition  | Continue to run until minimum tread depth is reached.                      |



**Shoulder Step Wear**

|                   |                                                                         |
|-------------------|-------------------------------------------------------------------------|
| Appearance        | Partial or full depression of the inside or outside shoulder tread rib. |
| Probable Cause    | This condition is common on radial tires in slow wearing operations.    |
| Corrective Action | None                                                                    |
| Tire Disposition  | Continue to run or rotate.                                              |



**Erosion/River Wear**

|                   |                                                                                                          |
|-------------------|----------------------------------------------------------------------------------------------------------|
| Appearance        | Circumferential worn area situated on the sides of the tread ribs.                                       |
| Probable Cause    | Condition most commonly occurs on slow wearing radial tires in steer or trailer position (free rolling). |
| Corrective Action | None                                                                                                     |
| Tire Disposition  | Continue to run.                                                                                         |



**Depression Wear**  
(Intermediate)

|                   |                                                                                   |
|-------------------|-----------------------------------------------------------------------------------|
| Appearance        | One or more interior ribs (not center) depressed more than adjacent ribs.         |
| Probable Cause    | Incorrect air pressure, worn mechanical part, or non-uniformity such as mismatch. |
| Corrective Action | Check air pressure and mechanical issues.                                         |
| Tire Disposition  | Rotate or retread.                                                                |



**Diagonal Wear**

|                   |                                                                                                                      |
|-------------------|----------------------------------------------------------------------------------------------------------------------|
| Appearance        | Manifests in the form of oblique wear patches. Can appear singularly or repeat around the circumference of the tire. |
| Probable Cause    | Misalignment, radial and lateral runout, severe out of balance, loose wheel bearings or steering parts.              |
| Corrective Action | Check for mismatch and worn parts.                                                                                   |
| Tire Disposition  | Reverse direction of tire or retread.                                                                                |



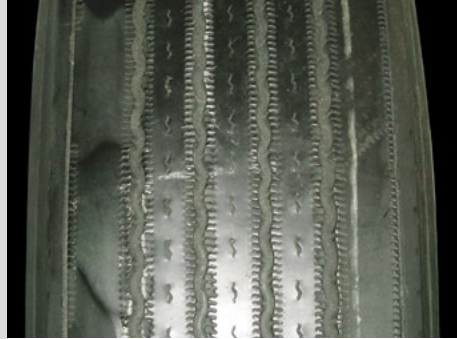
**Radial Feather Wear**

|                   |                                                                                                                                                                            |
|-------------------|----------------------------------------------------------------------------------------------------------------------------------------------------------------------------|
| Appearance        | Feathering at the edge of the tread ribs.                                                                                                                                  |
| Probable Cause    | Usually the result of continued exposure to lateral force, such as excessive toe. Can also form as a result of counter-steering to compensate for drive axle misalignment. |
| Corrective Action | Check alignment.                                                                                                                                                           |
| Tire Disposition  | Rotate to another position or retread.                                                                                                                                     |



### Multiple Flat Spotting Wear

|                   |                                                                                                                                                |
|-------------------|------------------------------------------------------------------------------------------------------------------------------------------------|
| Appearance        | Multiple radially worn areas around the tire.                                                                                                  |
| Probable Cause    | Faulty shocks, loose/worn wheel bearings, severe balance issues, mismatched pressures or tire diameters, excessive high speed empty operation. |
| Corrective Action | Check for mechanical issue, check air pressure.                                                                                                |
| Tire Disposition  | Continue to run or retread.                                                                                                                    |



### Depression Wear (Shoulder)

|                   |                                                                                                                   |
|-------------------|-------------------------------------------------------------------------------------------------------------------|
| Appearance        | Localized wear patch on the shoulder rib of the tire. This patch can repeat around the circumference of the tire. |
| Probable Cause    | Faulty shocks, lateral runout, loose wheel bearings, mis-mount, severe balance issue.                             |
| Corrective Action | Check for mechanical problem.                                                                                     |
| Tire Disposition  | Continue to run, rotate or retread.                                                                               |



### Depression Wear (Center)

|                   |                                                                                                            |
|-------------------|------------------------------------------------------------------------------------------------------------|
| Appearance        | Circumferential depression wear of the center tread rib.                                                   |
| Probable Cause    | Overloaded/underinflated, faulty shocks, loose wheel bearings, mismatch, high speed empty haul conditions. |
| Corrective Action | Check air pressures/load weight and worn parts.                                                            |
| Tire Disposition  | Continue to run, rotate or retread.                                                                        |

To learn more visit [www.BFGoodrichTruckTires.com](http://www.BFGoodrichTruckTires.com)

#### United States

**Michelin North America, Inc.**  
One Parkway South, Greenville, SC 29615  
**1-888-622-2306**

#### Canada

**Michelin North America (Canada), Inc.**  
2500 Daniel Johnson, Suite 500, Laval, Quebec H7T 2P6  
**1-888-871-4444**

#### Mexico

**Industrias Michelin, S.A. de C.V.**  
Av. 5 de febrero No. 2113-A, Fracc. Industrial Benito Juarez, 7 6120, Querétaro, Qro. Mexico  
**011 52 442 296 1600**

An Equal Opportunity Employer  
Copyright © 2014 MNA, Inc. All rights reserved.

» Take control today at [BFGoodrichTruckTires.com](http://BFGoodrichTruckTires.com).

